

Falk™ Wrapflex® R10

Precision. Power. Performance.

You want a trusted name when it comes to providing engineered power transmission products that improve productivity and efficiency. Rexnord provides superior products for your industrial applications world wide. We work closely with you to reduce maintenance costs, eliminate redundant inventories and prevent equipment downtime.

Applications include:

- ▶ pumps
- ▶ compressors
- ▶ general purpose machinery

Falk™ Wrapflex® R10

Low cost elastomer in shear with replace-in-place element. Easy installation and service without need to move hubs or connected equipment.

Falk is a Rexnord brand.



Ex Certified II 2GD c T5

Falk™ Wrapflex® R10

Features

- ▶ Torsionally Soft
- ▶ Patented Design
- ▶ Shear Design

Benefits

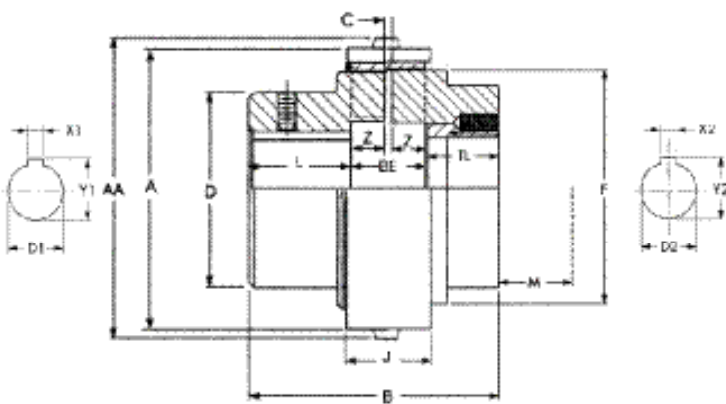
- ▶ Vibration damping
- ▶ Replace-in-Place element
- ▶ CRR - Increased flexibility
- ▶ Low Life time costs
- ▶ Protects connected equipment



R10

Finished Bore Hub

Taper Bush Hub



| Torque Demands Driven Machine | Typical Application for Electric Motor or Turbine Driven Equipment | Typical Service Factor |
|-------------------------------|---|-----------------------------|
| | Constant torque such as centrifugal pumps blowers and compressors | 1.0 |
| | Continuous duty with some torque variations including plastic extruders and forced draft fans | 1.5 |
| | Light shock loads from metal extruders, cooling towers and log haulers | 2.0 |
| | Moderate shock loading as expected from a car dumper, stone crusher, vibrating screen | 2.5 |
| | Heavy shock load with some negative torques from reciprocating pumps, compressors, reversing turnout tables | 3.0 |
| | Frequent torque reversals such as reciprocating compressors with frequent torque reversals which do not necessarily include reverse rotations | Consult Rexnord Engineering |

| Size | Tnom Nm | n max min-1 | D1 max | Bush size | D2 max | A | | AA | | B | | BE mm | C mm | D mm | L mm | TL mm | M mm | F mm | Z mm | m* | |
|------|---------|-------------|--------|-----------|--------|----------|----------|----------|----------|--------|--------|-------|------|------|------|-------|------|------|------|----------|----------|
| | | | | | | Nylon mm | Steel mm | Nylon mm | Steel mm | (1) mm | (2) mm | | | | | | | | | Nylon kg | Steel kg |
| 2R | 11 | 4 500 | 22 | - | - | 49 | 49 | 52 | 52 | 56 | - | 17 | 2 | 39 | 20 | - | - | 39 | 8 | 0,4 | 0,4 |
| 3R | 34 | 4 500 | 28 | - | - | 61 | 61 | 64 | 64 | 69 | - | 19 | 2 | 51 | 25 | - | - | 51 | 8 | 0,8 | 0,8 |
| 4R | 56 | 4 500 | 34 | - | - | 71 | 71 | 75 | 75 | 80 | - | 20 | 2 | 58 | 30 | - | - | 58 | 9 | 1,3 | 1,25 |
| 5R | 62 | 4 500 | 38 | 1108 | 28 | 81 | 81 | 77 | 77 | 72 | 65 | 20 | 2 | 60 | 26 | 23 | 19 | 64 | 9 | 1,3 | 1,5 |
| 10R | 130 | 4 500 | 48 | 1210 | 32 | 95 | 95 | 91 | 91 | 90 | 90 | 24 | 2 | 72 | 34 | 33 | 27 | 76 | 11 | 2,5 | 2,7 |
| 20R | 320 | 4 500 | 60 | 1610 | 40 | 132 | 130 | 126 | 98 | 124 | 98 | 32 | 2 | 92 | 45 | 33 | 27 | 102 | 15 | 5,6 | 6,1 |
| 30R | 520 | 4 500 | 65 | 2012 | 48 | 153 | 149 | 147 | 143 | 152 | 120 | 36 | 2 | 105 | 58 | 42 | 35 | 118 | 17 | 9,4 | 10 |
| 40R | 1 030 | 3 600 | 85 | 2517 | 60 | 190 | 185 | 182 | 177 | 181 | 139 | 47 | 5 | 130 | 67 | 46 | 42 | 150 | 21 | 17 | 18 |
| 50R | 2 500 | 3 000 | 105 | 3020 | 75 | 239 | 232 | 231 | 224 | 215 | 171 | 61 | 5 | 170 | 77 | 55 | 53 | 190 | 28 | 34 | 36 |
| 60R | 4 000 | 2 500 | 135 | 4030 | 100 | - | 278 | - | 267 | 275 | 245 | 75 | 5 | 200 | 100 | 85 | 86 | 228 | 35 | - | 62 |
| 70R | 8 000 | 2 100 | 160 | 4535 | 110 | - | 321 | - | 310 | 324 | 264 | 84 | 5 | 227 | 120 | 90 | 104 | 270 | 40 | - | 98 |
| 80R | 15 000 | 1 800 | 190 | 5040 | 125 | - | 381 | - | 370 | 376 | 305 | 97 | 6 | 270 | 140 | 104 | 123 | 328 | 45 | - | 165 |

*weight on maximum bore and key way • Dimension C(1) finished bore hubs - C(2) with Taper Bush hubs



REXNORD NV, Belgium

Dellingstraat 55

2800 Mechelen

Phone: +32 / 15 44 38 11

Fax: +32 / 15 44 38 60

E-mail: CSB@rexnord.com

www.rexnord.eu

Contact